



# Serving the Communities of Castleton & Marshfield

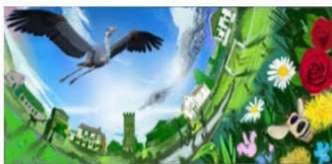
**Chairperson:** Cath Davis | **Clerk:** Mr G C Thomas  
4 Kenilworth Road Newport South Wales NP19 8JQ

**The weather has been very kind in recent weeks with lovely dry days and lots of sunshine; let's hope it continues.**

Marshfield Community Council still has a couple of vacancies for councillors and would love to welcome some enthusiastic community members to join the team. Meetings are the second Tuesday of the month held at Marshfield Village Hall, Wellfield Road at 7.15pm to 9.45pm. All meetings are open to the public and everyone is welcome.

## Bird Nesting Boxes Update

All 64 nesting boxes have been distributed, decorated and ready for placement. Thank you to all the children's and older person's groups that took part in this nature project, it has been very successful. We look forward to seeing them all around our villages (some are up trees already) and an increase in the numbers of birds.



## Marshfield Village Hall

The village hall and surrounding playing field is a wonderful community facility right in the heart of the village. It is run by an enthusiastic committee who are always looking for help and volunteers to join them. They have just completed three months of providing a weekly Warm Hub for the community which was a great success. If you can spare just a small amount of

time, please contact them via details on their website [www.marshfieldvillagehall.co.uk](http://www.marshfieldvillagehall.co.uk).

Our villages are lucky to have many clubs, groups and voluntary organisations that are very active. Meeting places for these include Marshfield Village Hall, Castleton and District Village Hall, St Mary's Church and the Gateway Christian Centre. To get involved or find a group visit the following websites:  
[www.castletonvillagehall.weebly.com](http://www.castletonvillagehall.weebly.com)  
[www.castletonbaptistchurch.co.uk](http://www.castletonbaptistchurch.co.uk)  
[www.mountainandmarshchurches.org.uk/st-mary](http://www.mountainandmarshchurches.org.uk/st-mary)

## The Village Coffee Shop

This community facility is a real asset to our community and is run by hardworking volunteers opening most Saturdays and Sundays. All profits are reinvested back into the village hall to improve facilities. If you have a couple of hours to spare and wish to volunteer, please visit them on Facebook.



## Marshfield Magpies Litter Pick Group

This group works hard to keep our villages free from litter; the group also report any fly tipping spotted. Meeting up monthly, volunteers are supplied with equipment and bags. It is a shame that certain members of society do not respect our community and environment and leave a terrible mess for others to clear up. Please be considerate to our community and take your

litter home and recycle. The reporting of litter and fly tipping to Newport City Council ([www.newport.gov.uk](http://www.newport.gov.uk)) is essential if it on or near the highway. If the fly tipping is in a watercourse, please report to Natural Resources Wales [www.naturalresources.wales](http://www.naturalresources.wales)

## Litter Bins Marshfield Road

The recent disappearance of three litter bins from Marshfield Road between Mallards Reach and Groes Corner remains a mystery! Thankfully one has reappeared which is very good news. The community council is working on getting the others reinstated. Until this has been accomplished, please take your litter and dog poo bags home.



## Wentlooge Solar Development (Resubmission)

This Development of National Significance CAS-01772 – Z5D5P2 comprising of approximately 400 acres just south of Marshfield village has two more hearing sessions taking place on the 2nd and 3rd July 2025. All details concerning this development can be found on the PEDW website [www.gov.wales/planning-and-environment-decisions-wales](http://www.gov.wales/planning-and-environment-decisions-wales)

## Friends of the Gwent Levels

Are a group trying to stem the constant and increasing threat of development on the Gwent Levels. The landscape, habitats and biodiversity are in sharp decline and there is a danger that a tipping point will soon be reached of irrecoverable biodiversity and landscape loss; found on Facebook.